

The Bill Bradley Sports and Recreation Center R a m p o C o l l e g e o f N e w J e r s e y

Rampo College of New Jersey, a top ranked public liberal arts college founded in 1969, has transformed in recent years from a primarily commuter based institution to one where over half of its enrollment of 5,600 lives on campus. The design of the new Sports and Recreation Center developed through collaboration with the College starting with an update of the College's Campus Master Plan and with the development of a Sports and Recreation Master plan. Through this process the design team developed a level of intimacy with the campus and with the institutional character of the College reflected in the design.

Draw inspiration from and connect with the historic and natural environment.

Reflect Rampo's open and egalitarian character.

Express the positive energy of students and student athletes.

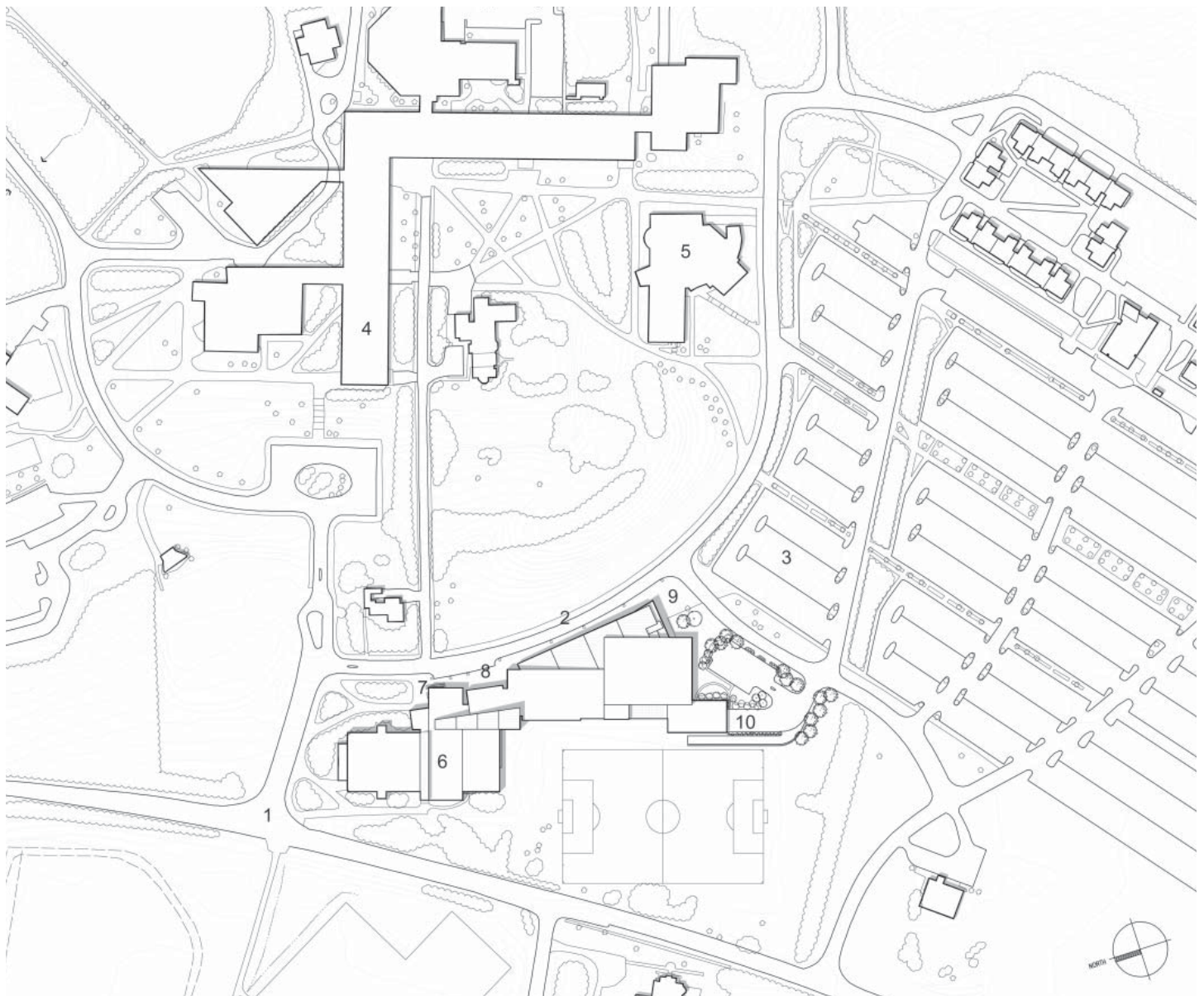


- 1 main campus entrance
- 2 campus inner loop road
- 3 main campus parking lots
- 4 academic core
- 5 Berrie Center for Performing Arts
- 6 existing athletic building
- 7 recreation entrance
- 8 team entrance
- 9 events entrance
- 10 service entrance

The site for the Center extends irregularly to the south of the existing athletic building - a 33,000 gsf metal panel structure comprising a gymnasium and natatorium separated by a glass-peaked central corridor and locker complex. The existing entrance terminated a primary campus axis that extends along one wing of the academic core, downward following the line of the original estate's driveway. Because of the clear connection to campus, we chose to retain the primary student recreation entrance at this location.

The site is bounded on the west by the campus inner loop road which follows the base of a sweeping hillside - a promontory occupied by the estate's original residence and gardens. To the east, residential property not yet owned by the College created a narrow pinch-point for connection of any new structure to the existing. However, the site widens to the south toward the secondary campus entrance road and primary campus parking lots. The plan envisions a playing field as shown below to replace the existing residential property, creating a calm foreground for the building as viewed from the public road serving the campus.

Taking a cue from the existing glass-connected volumes, our addition fills the site with new volumes, twisting and stacking them horizontally and vertically. Two new glass volumes establish the connection, provide for public movement and provide distinct entrances for recreation, teams and events.



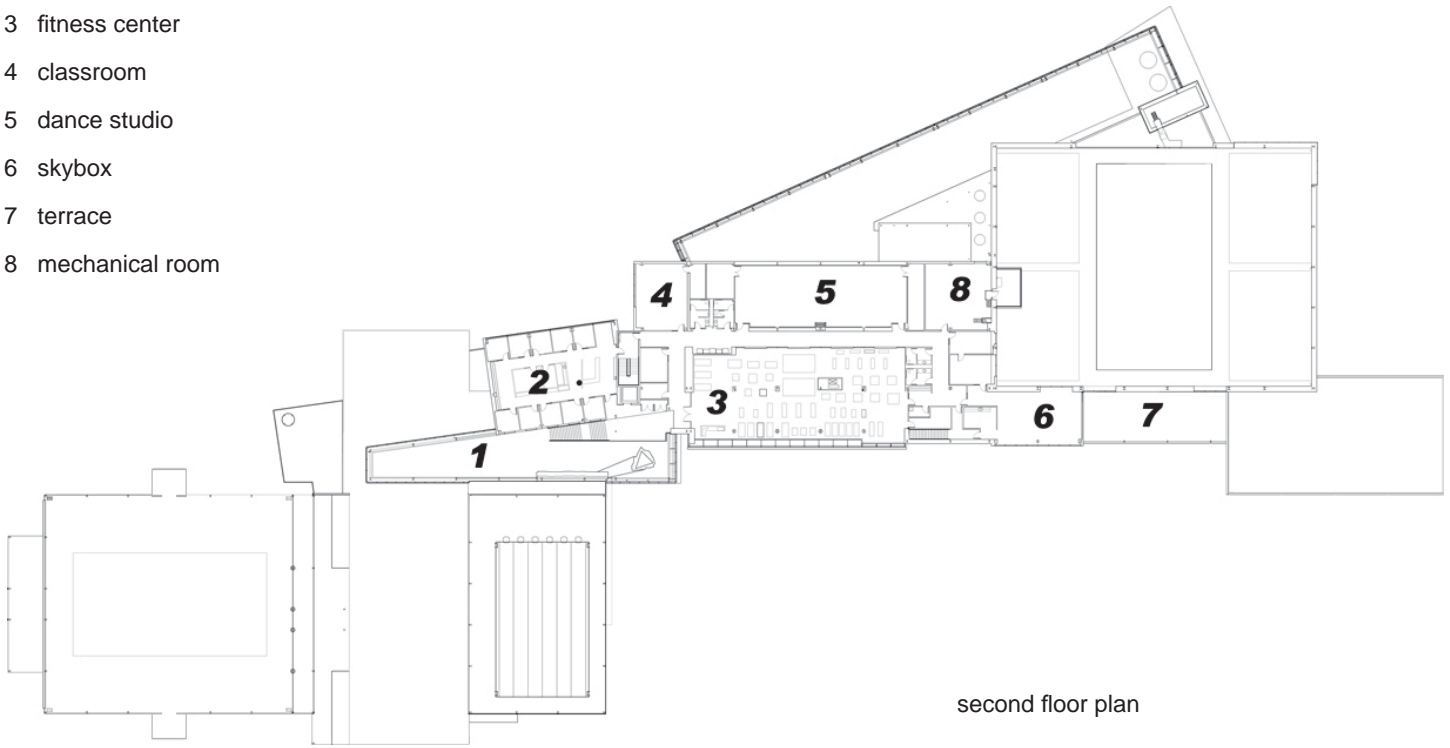


reflecting the mansion's hillside tree line at dawn

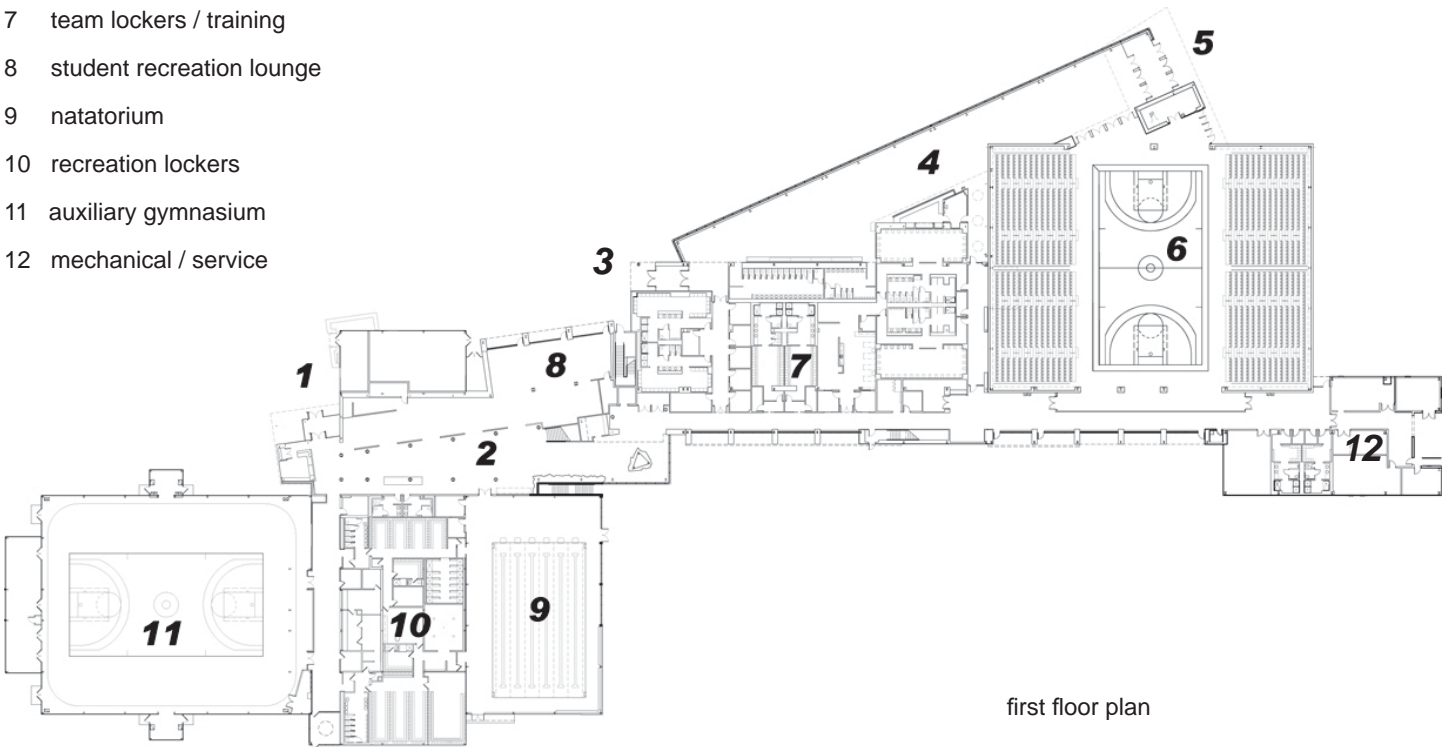
arena and event entrance from the mansion's hillside lawn

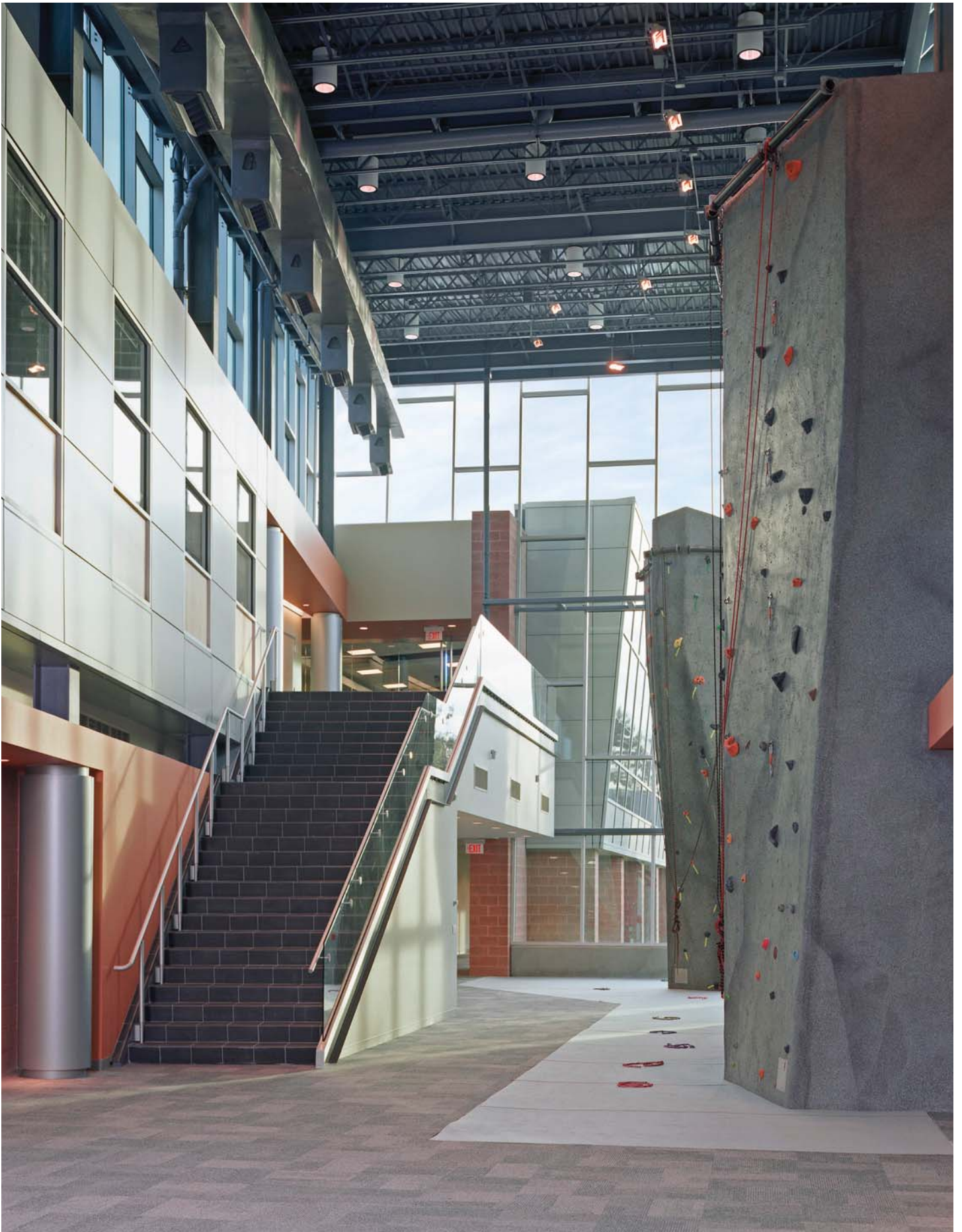


- 1 open to student lobby below
- 2 athletics staff suite
- 3 fitness center
- 4 classroom
- 5 dance studio
- 6 skybox
- 7 terrace
- 8 mechanical room



- 1 recreation entrance
- 2 recreation lobby / climbing wall
- 3 service / mechanical
- 4 events lobby
- 5 events entrance
- 6 main arena
- 7 team lockers / training
- 8 student recreation lounge
- 9 natatorium
- 10 recreation lockers
- 11 auxiliary gymnasium
- 12 mechanical / service





recreation lobby - view toward fitness center

The volumetric expression of major functional components was accomplished by development of simple rectilinear or trapezoidal shapes with varied development of the building skin using a material palette of metal panel, red-orange masonry, glass curtain wall and translucent panels. The palette derives from the campus with particular attention to the Berrie Center for Performing Arts, a Hardy Holzman Pfeiffer-designed building occupying the other end of the campus hillside and visible in counterpoint to the Bradley Center.

Volumes vary in size and are placed, one against the other, to mitigate the large scale of the project, to establish appropriate functional relationships and to establish identifiable destinations and opportunities both internally and externally. The glass volume of the recreational lobby rises to expose near and distant views and to engage the second floor. The natatorium, fitness center and administrative volumes pierce the edge of the glass volume with similar expressions inside and out, in this manner drawing the eye both to the destination and to the environment outside. The student recreation lounge extends through gracious openings under the administrative volume and out to a street-side cafe that responds to the landscape contour across the inner loop road. A few steps into the Lobby from the entrance reception desk reveals views through the building's functional spaces to surrounding campus landscapes in every direction. The climbing wall tower, occupying the apex of the volume feels as if it is almost outdoors.

The team athletic functions extend on the first level under the fitness center volume and are gathered together by a gallery arcade that visually supports the second level volumes. The arcade gives way to a grassy "stadium" embankment for the future playing field and connects locker, training and equipment facilities to the "back" of the main arena, establishing the desired separation of team and spectator arrival during events. A mechanical and service volume completes the composition at the north end, repeating the restored metal panel expression of the existing building as a "bookend." Finally, overlaying the arena, a small volume for the skybox entertainment suite offers views of the arena court and playing field as well as access to the terrace.

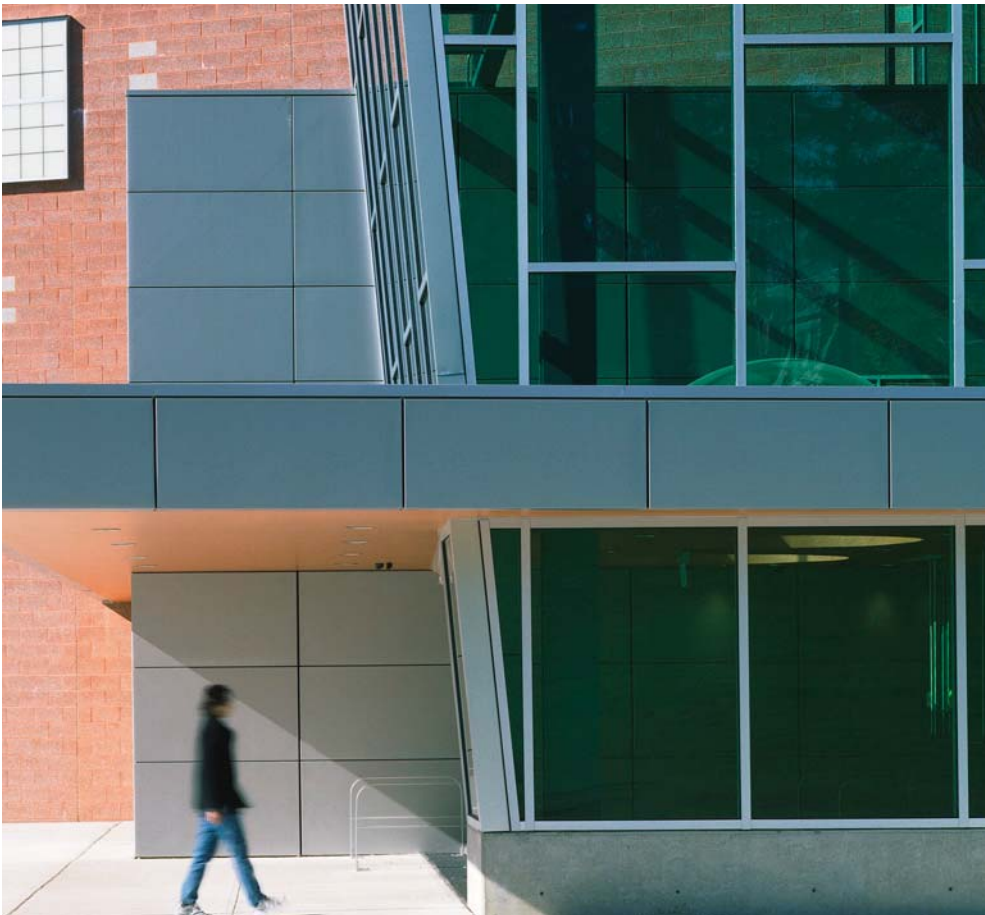
Toward the campus, taking advantage of the expanding site area, another rising glass volume overlays the arena and team areas establishing an ample prefunction space and events entry. The sweeping expanse of glass allows the visual engagement of the historic the mansion hillside as part of the building's spacial definition and, through its transparency, acts as an open invitation to events within.



west elevation



east elevation



events entry canopy detail



recreation lobby volume surrounded by natatorium, fitness center, team arcade and skybox / playing field grass stadium embankment in foreground



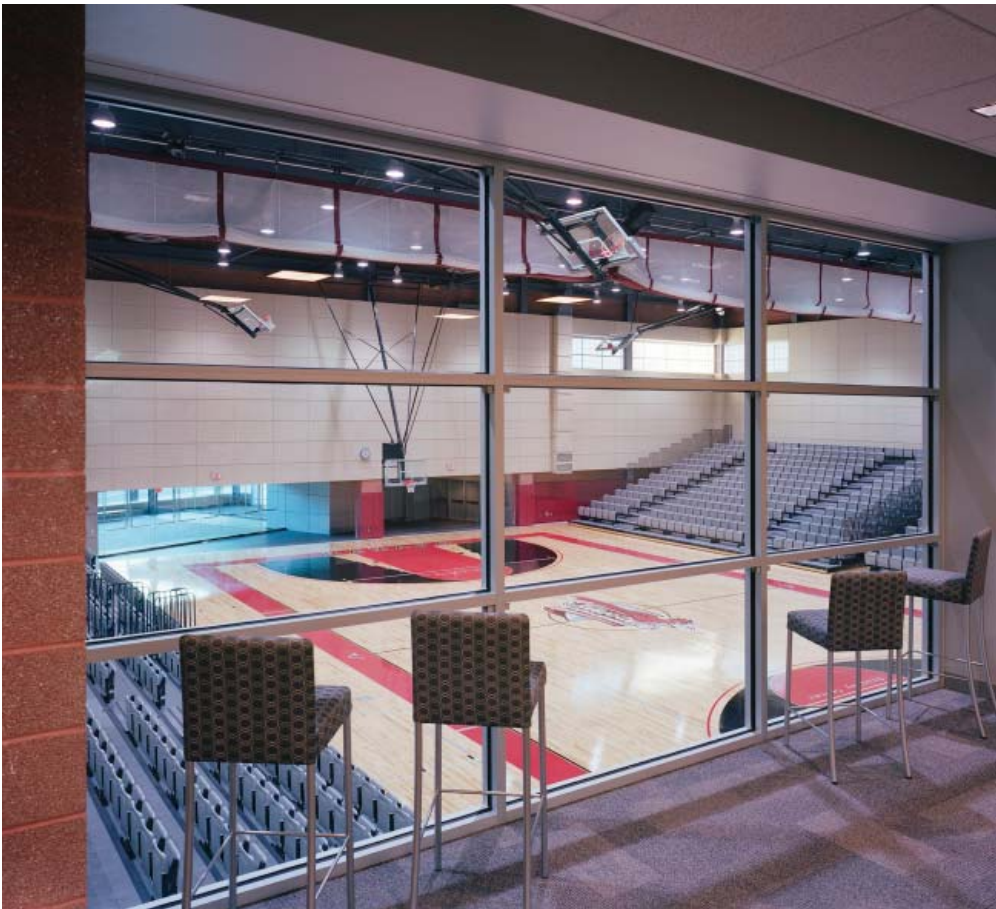
fitness center - view toward translucent panel-clad natatorium and mountains beyond

event lobby - view toward main parking lots with main arena entry to right





fitness center reception - view to mountains and to future playing field in foreground



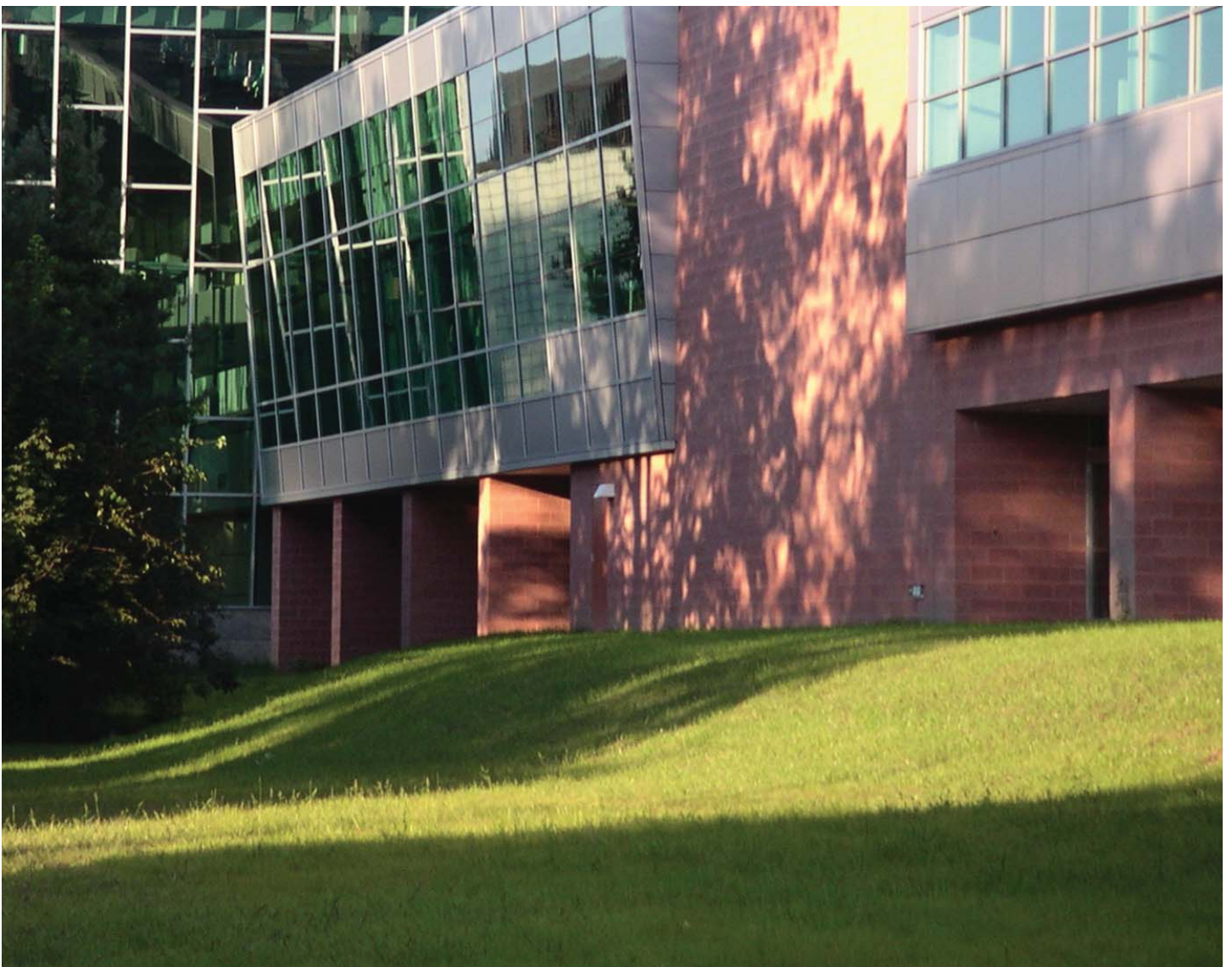
main arena from skybox entertainment suite



event entry with view to arena seating

from mansion hillside with administrative volume and mechanical volumes to extreme ends.

detail - recreation lobby and fitness center facades





program

1600-seat arena for sports and convocation use
gracious prefunction space with concessions
varsity team sports complex with lockers, training and equipment areas
5000 sf fitness center - cardiovascular, training and free weights
2000 sf dance studio
natatorium - fully reclad and restored
recreation locker and equipment area - reconfigured and restored
auxiliary gym - reconfigured and restored with jogging track
student recreation lounge - games, tv, vending
skybox entertainment suite
large classroom and tutoring room
administrative suite and athletic director's suite

existing renovation - 33,000 gsf

new construction - 82,000 gsf