

New Library Building  
The College of New Jersey



This new 139,000 sf state-of-the-art main Library building was designed to integrate seamlessly with The College of New Jersey's Collegiate Georgian architectural vocabulary, a design mandate of the College administration. All traditional library functions are accommodated, as well as after-hour amenities such as a café, auditorium, late-study lounge, and computer labs.

The new building replaces the campus's original 1932 library / 1968 library annex complex. The decision to build a new, Collegiate Georgian-style building came after a careful study of renovation and addition options for the old library complex. The College decided that neither program nor campus architectural vocabulary need be sacrificed in a new building, and asked the design team to create a new, stylistically-Georgian central library that would represent the intellectual heart of the campus and would become the College community's academic and social destination of choice.



1930's



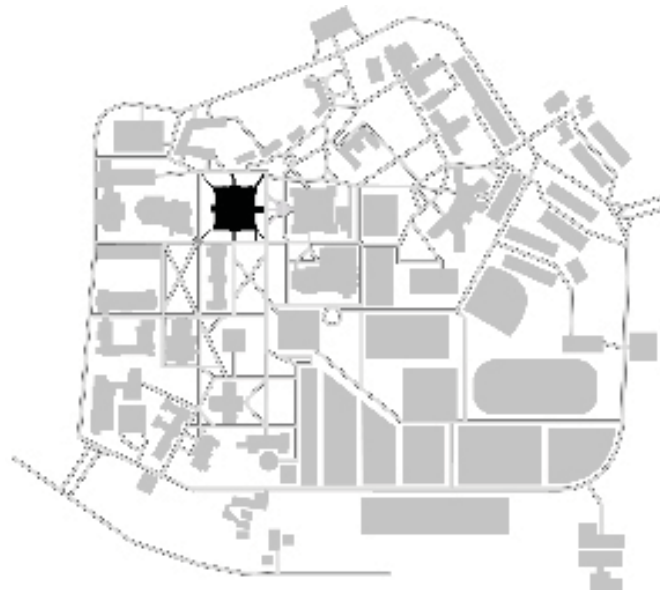
1960's





1990's



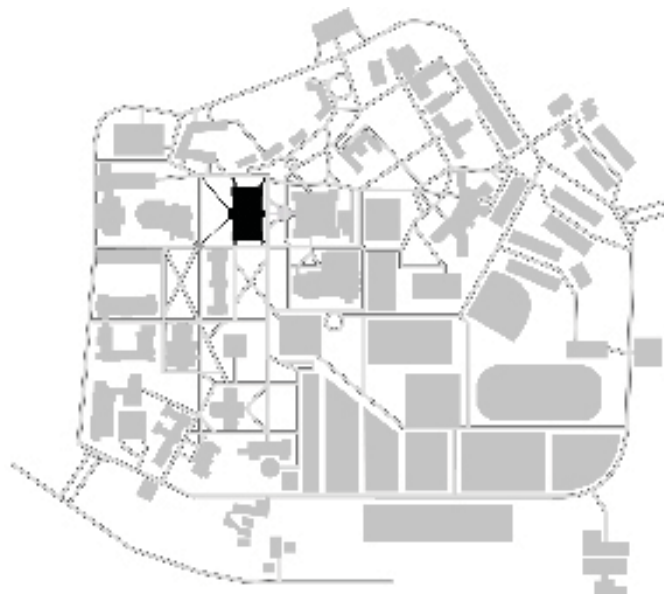


Master Plan Siting

The design team began by analyzing the College's master plan placement for the new building, and quickly realized that the building the College imagined, the campus-standard Georgian expression of two-stories plus a dormered roof, would sprawl over too large of a footprint to fit comfortably over the selected site.

Instead, the design team proposed a three-story plus dormered roof expression that incorporated an exterior arcade built into the building's water table, lifting the building one story above other buildings on campus, but maintaining the traditional Georgian proportions of other campus buildings: an appropriate gesture given the desired prominence of the new library as intellectual campus center.

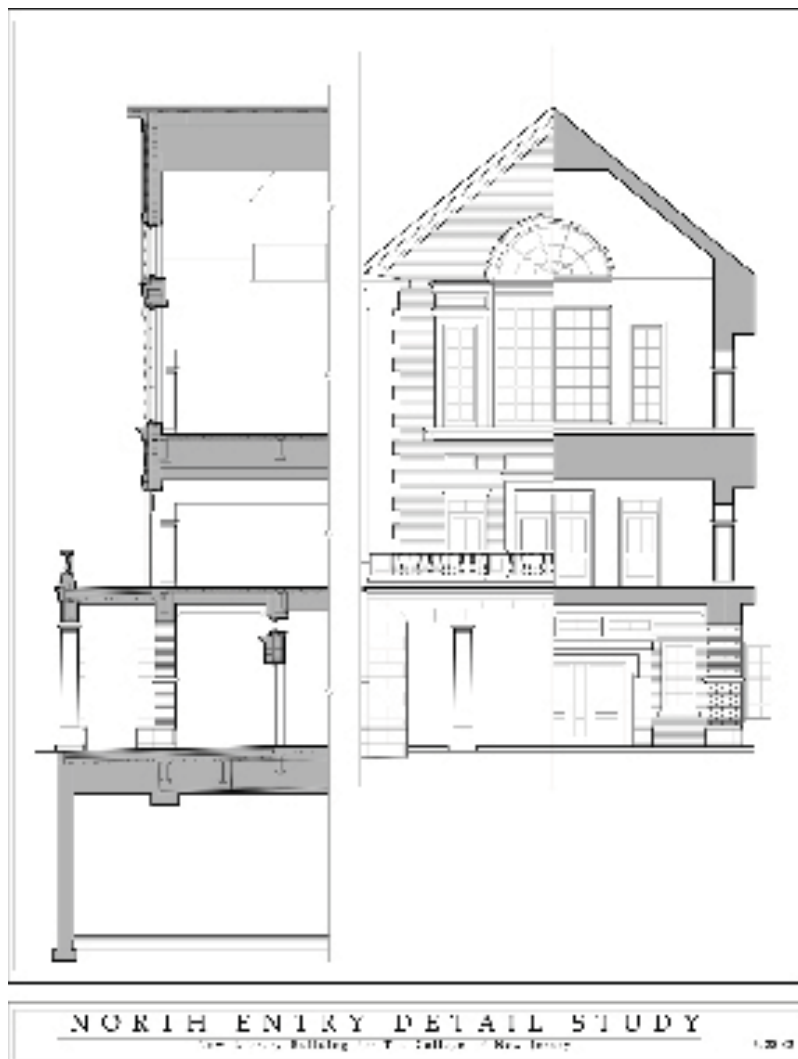
At the same time, the design team repositioned the now-smaller footprint to align with campus walks, resulting in the creation of a new campus quad and affording the preservation of the last remaining heavily-forested place on campus. The arcaded-facades extend the campus walks directly to the building entrances on each the north and south sides of the building and add a unique and gracious design feature not previously utilized on campus.



Final Siting





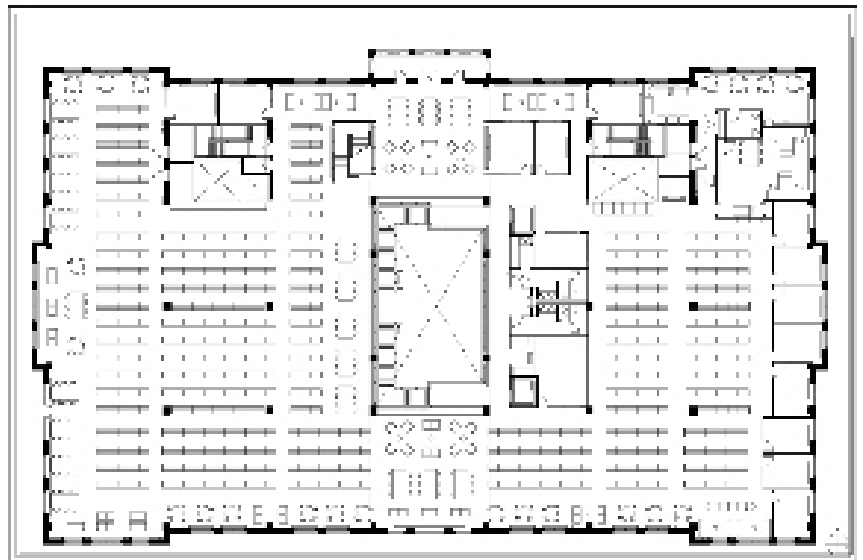


The College agreed with the design team that the approach to materiality and detailing should be compatible to that of the campus's original buildings, whose character and sense of classicism were distinct from some of the campus's more contemporary stylized buildings. Cut stone, red brick, white cornices and blue slate dominate the materials palette. The design team also demonstrated the importance of relating high-quality exterior details to interior space-making through a series of Beaux Arts era section-elevation studies, and used these exercises to inform the building sections, wall sections and exterior elevations and details that evolved. Inside, tenets of good collegiate library planning inform every aspect of the plan and vertical organization of the five-story (basement plus three full stories, plus a fourth floor nestled behind a sloped, dormered roof) building.

Entrances to the new building are positioned to take full advantage of the newly configured campus features, and bring patrons into a two-story center lobby space from which all library functions and destinations are accessible and easily discernable. Reference collections, helpful librarians and the building's after-hour study spaces and café are housed on this main level, creating a hub of activity that immediately make the library a desirable spot for research, learning and socialization.

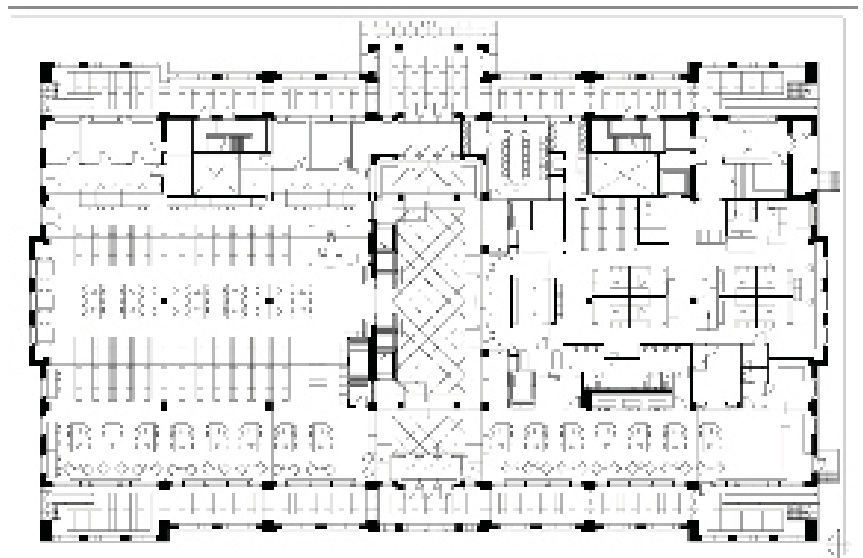






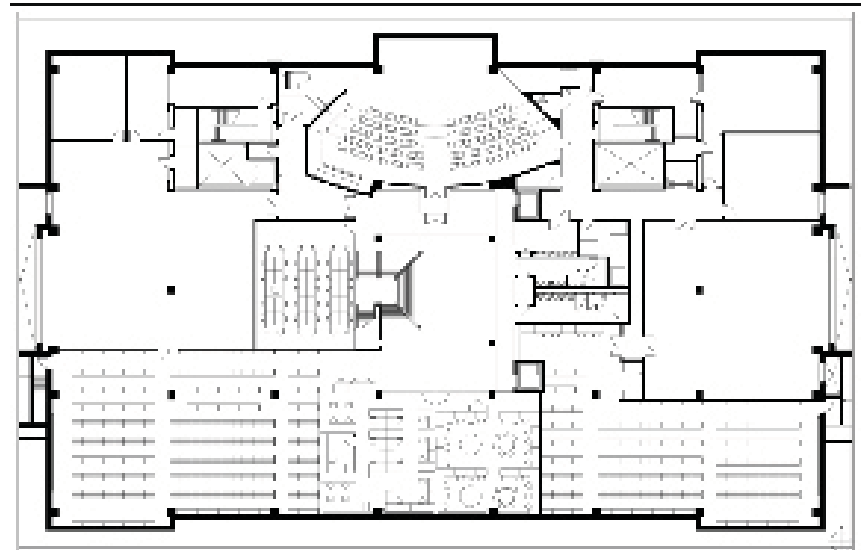
SECOND FLOOR PLAN

1900



FIRST FLOOR PLAN

1900



LOWER FLOOR PLAN

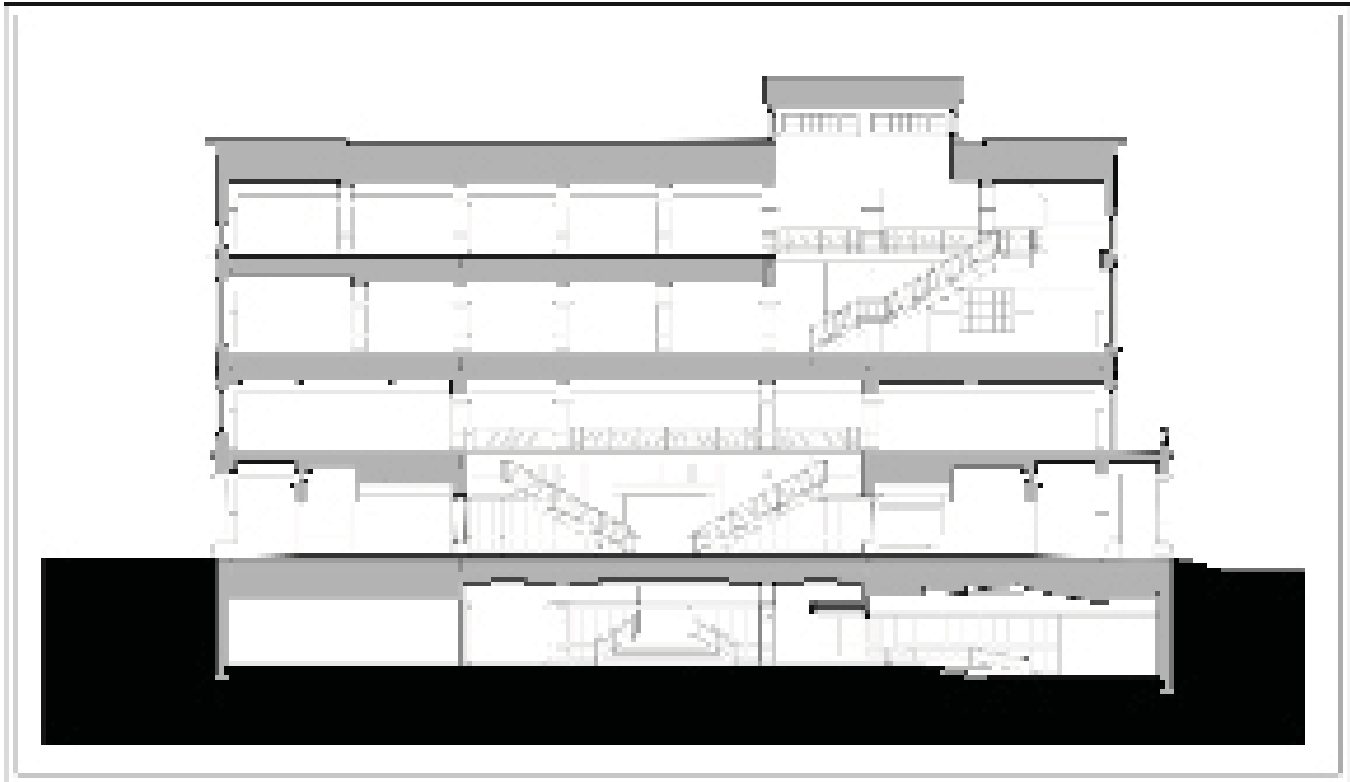
1900



The central atrium between the first and second floors organizes the building's many program areas, collections, and varied types of patron reader seating. A more intimate and quite atrium with roof monitor connects the third and fourth floors of the building, and double-height windows frames views into the landscape and across campus.

Ample natural lighting throughout the building enhances the wide variety of seating options offered, from large formal central reading rooms to more intimately scaled dormer-window study alcoves. Group study rooms are plentiful and are arranged to allow for a variety of study needs, from naturally-lit perimeter group study rooms to AV-intense group project presentation/production rooms.

Book collections are arranged logically and simply, for both ease of collection shelving and ease of supervision by staff. The Library has experienced a nearly three-fold increase in gate count since opening its doors in the fall of 2005. Study stations are typically full in the late study area when the building closes on week nights, and many students choose the Library for reconnecting with friends on Friday evenings and weekends. Prospective student tours of the campus originate in the Library lobby.



**BUILDING SECTION**

New Jersey Building for The College of New Jersey

1.29.03













ACCESS SERVICES